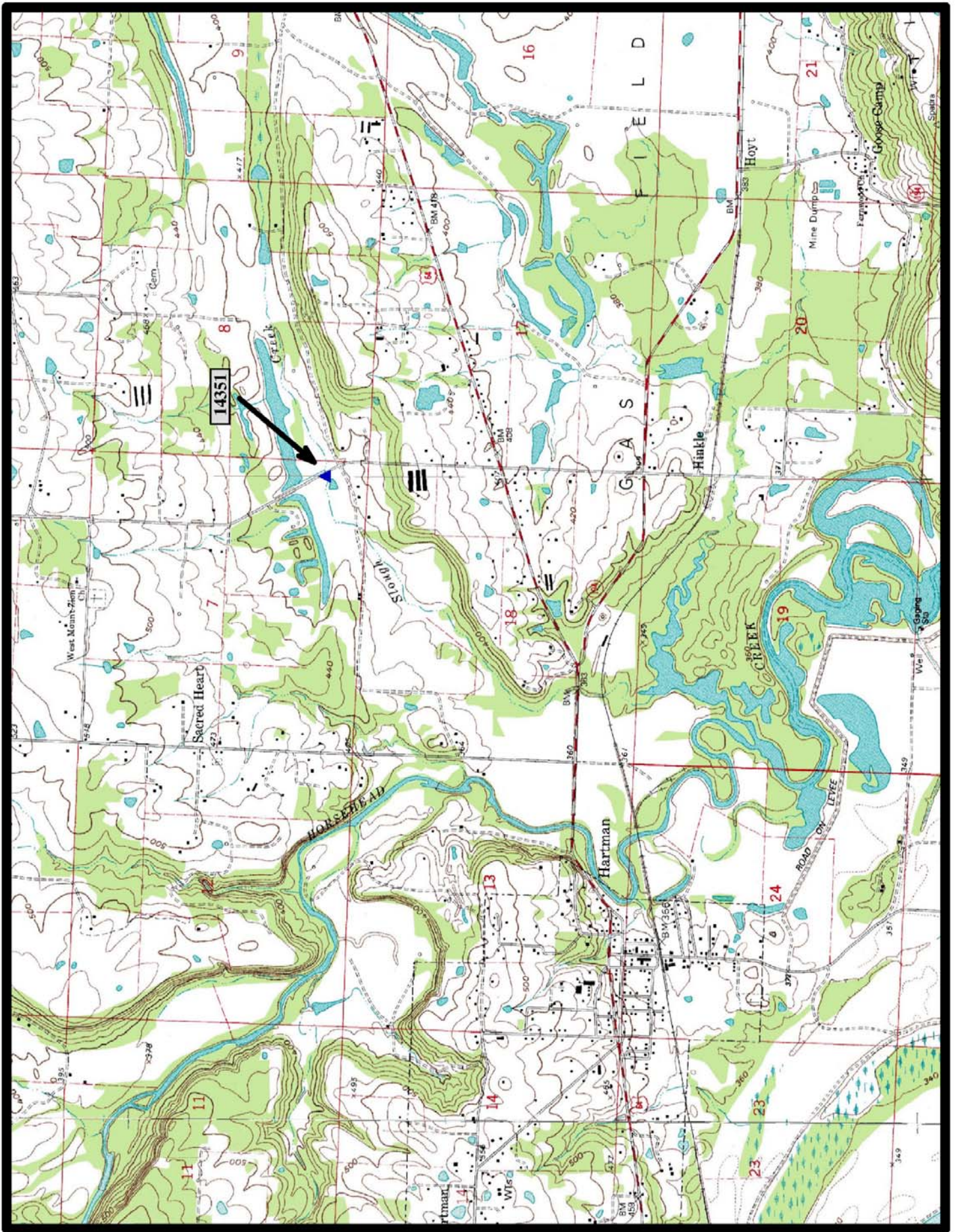


- ▲ In-Service Concrete Slab (14)
- ⊘ Demolished NR Concrete Slab (1)
- ◻ Preserved Concrete Slab (1)

Concrete Slab Bridges



HISTORIC BRIDGE #14531
COUNTY ROAD 2243
JOHNSON COUNTY
CONCRETE SLAB
CROSSES - SLOUGH CREEK
DATE OF CONSTRUCTION - 1939
BUILDER - WORKS PROGRESS ADMINISTRATION (WPA)
HISTORIC BRIDGE INVENTORY DATE - 2010
SHPO NUMBER -
HAER NUMBER -
DATE LISTED ON NATIONAL REGISTER -
LAT./LONG. 35:26:53.40, -93:34:59.90

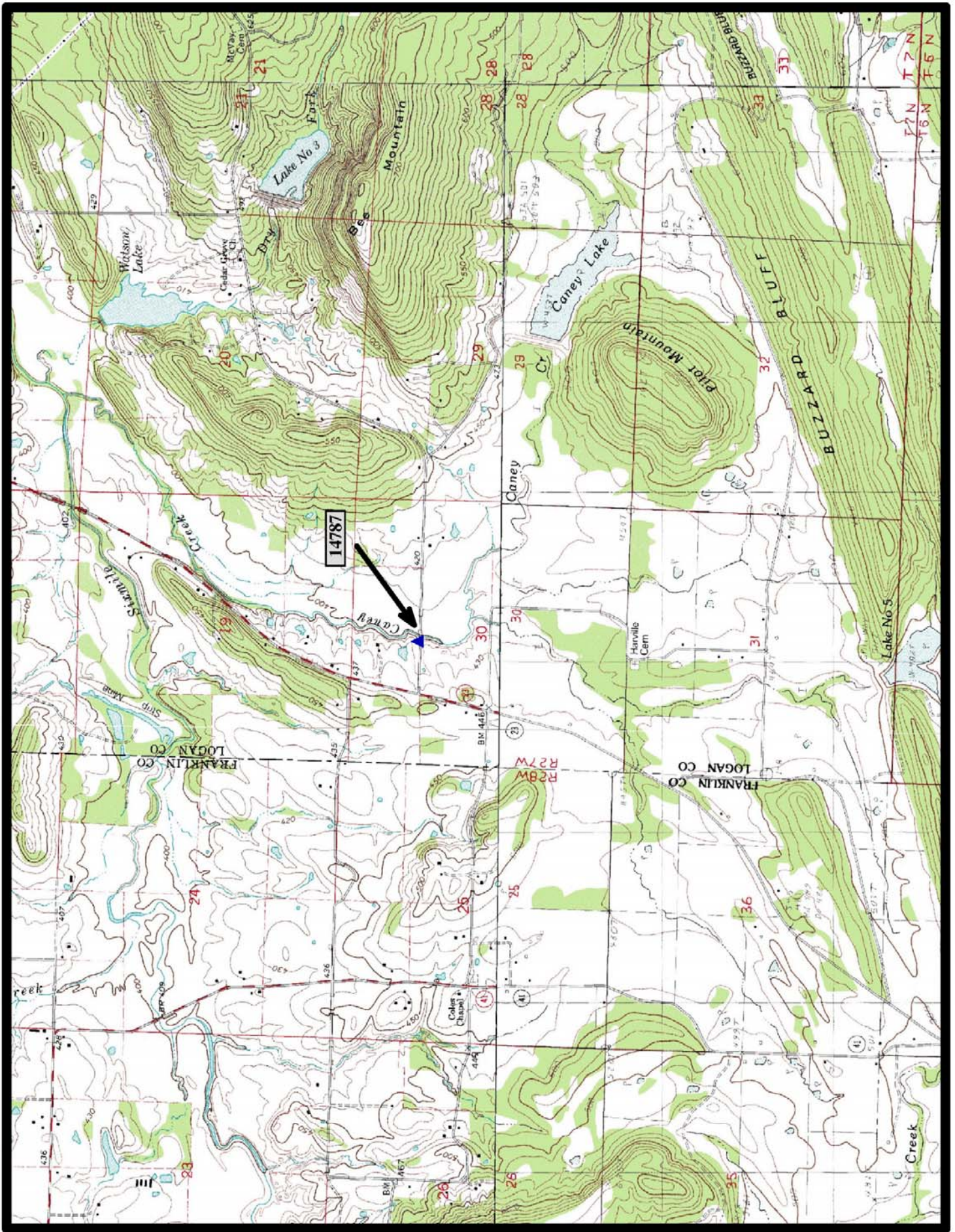


↑
North

Hartman 7.5 min. Quad



HISTORIC BRIDGE #14787
SHAVER ROAD (Co. Rd. 49)
LOGAN COUNTY
CONCRETE SLAB
CROSSES - CANEY CREEK
DATE OF CONSTRUCTION – 1942
BUILDER - WORKS PROGRESS ADMINISTRATION (WPA)
HISTORIC BRIDGE INVENTORY DATE - 2010
SHPO NUMBER –
HAER NUMBER -
DATE LISTED ON NATIONAL REGISTER -
LAT./LONG. 35:15:15.62, -93:54:39.62

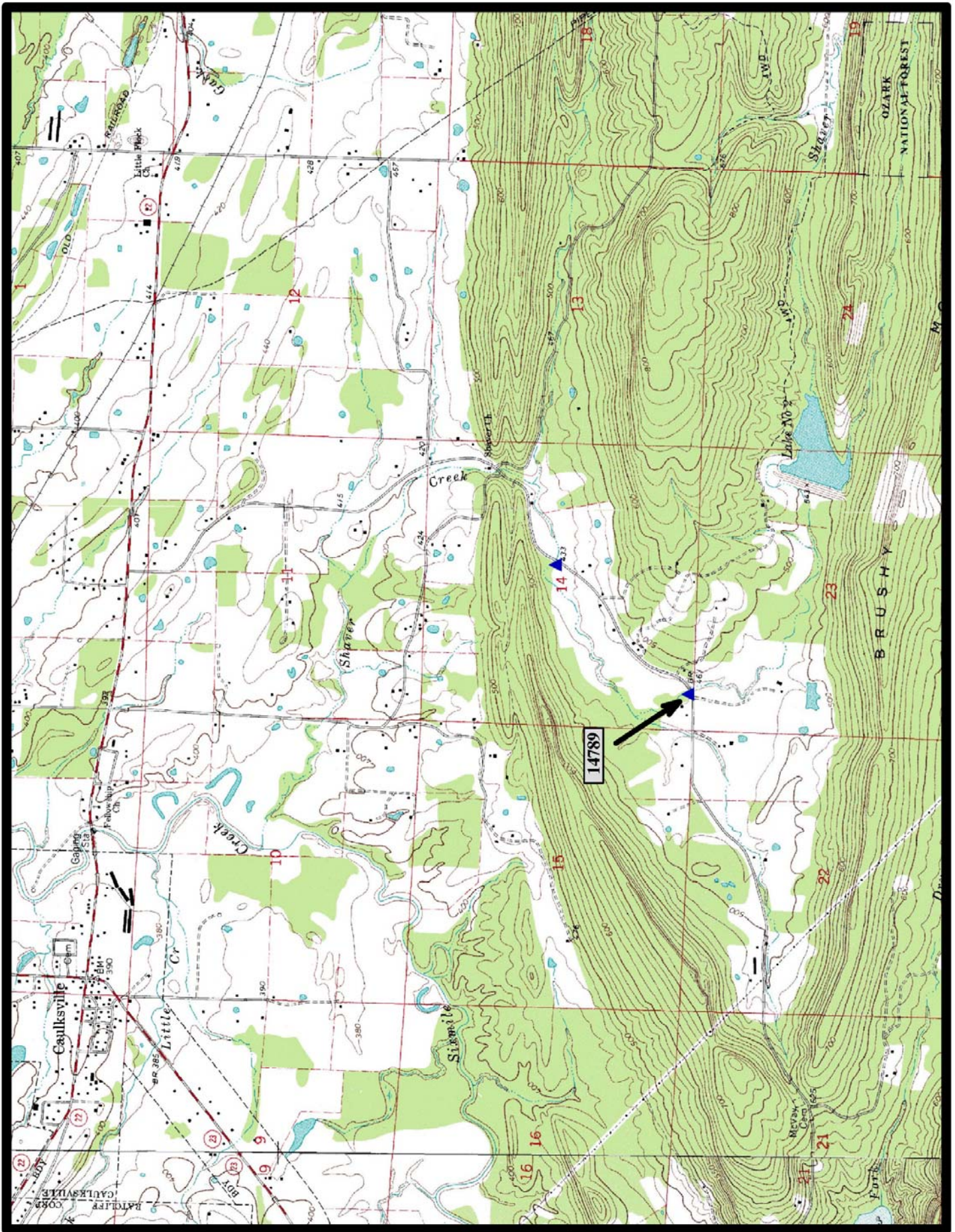


North

Branch 7.5 min. Quad



HISTORIC BRIDGE #14789
SHAVER ROAD (Co. Rd. 49)
LOGAN COUNTY
CONCRETE SLAB
CROSSES - SHAVERS CREEK
DATE OF CONSTRUCTION – 1942
BUILDER - WORKS PROGRESS ADMINISTRATION (WPA)
HISTORIC BRIDGE INVENTORY DATE - 2010
SHPO NUMBER –
HAER NUMBER -
DATE LISTED ON NATIONAL REGISTER -
LAT./LONG. 35:16:12.81, -93:50:42.59

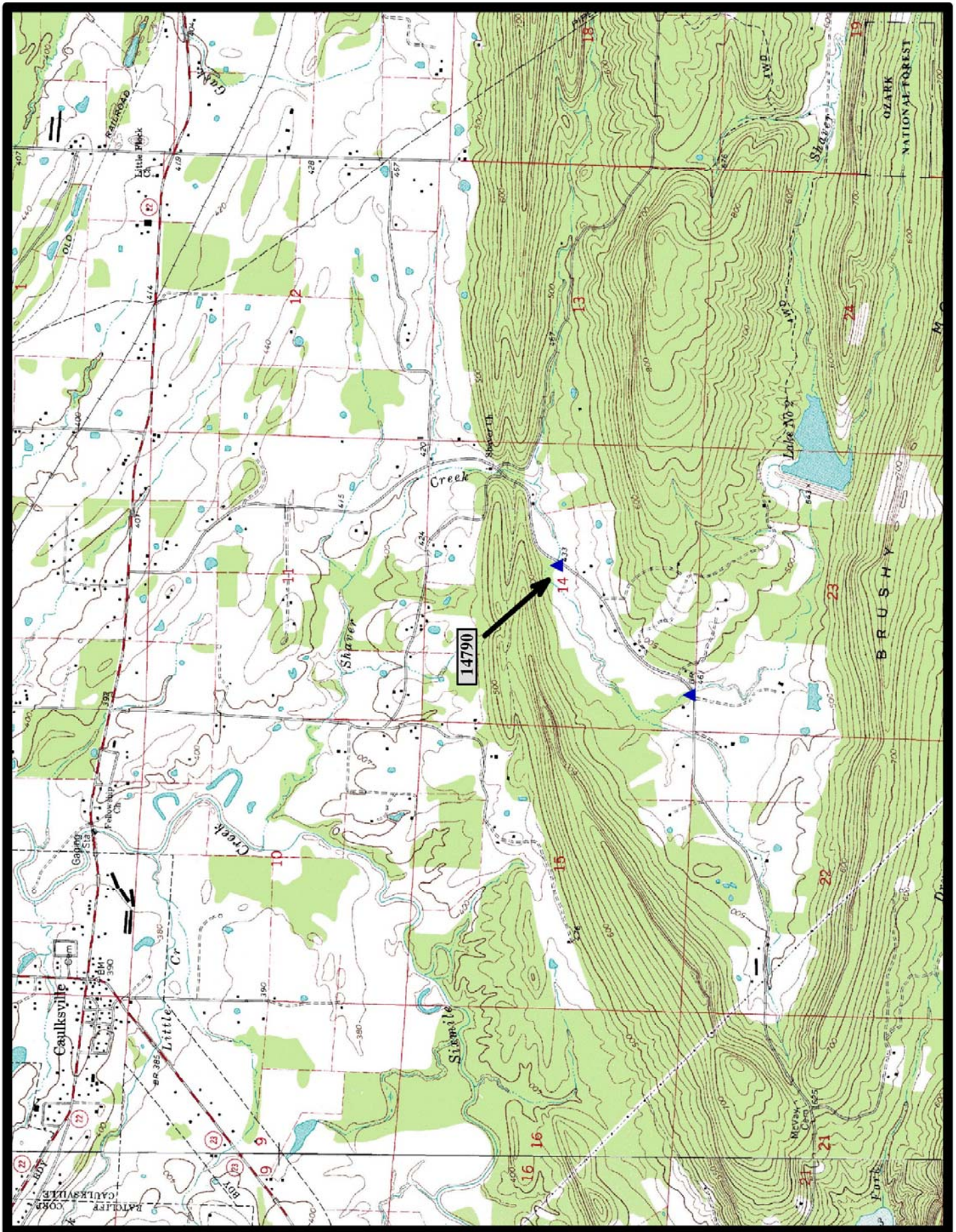


↑
North

Caulksville 7.5 min. Quad



HISTORIC BRIDGE #14790
SHAVER ROAD (Co. Rd. 49)
LOGAN COUNTY
CONCRETE SLAB
CROSSES - SHAVERS CREEK
DATE OF CONSTRUCTION - 1942
BUILDER - WORKS PROGRESS ADMINISTRATION (WPA)
HISTORIC BRIDGE INVENTORY DATE - 2010
SHPO NUMBER -
HAER NUMBER -
DATE LISTED ON NATIONAL REGISTER -
LAT./LONG. 35:16:38.22, -93:50:12.89

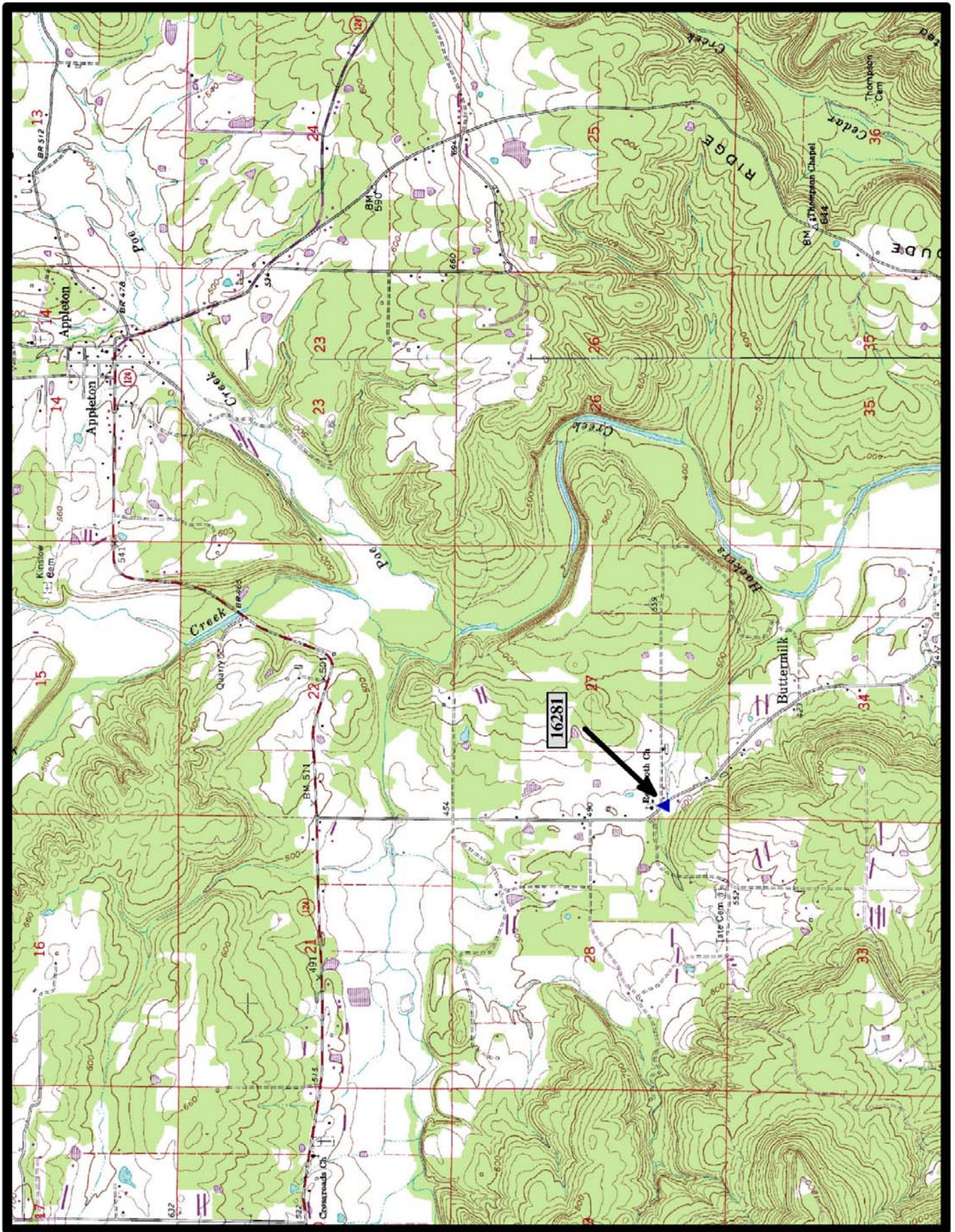


←
North

Caulksville 7.5 min. Quad



HISTORIC BRIDGE #16281
BUTTERMILK ROAD (Co. Rd. 48)
POPE COUNTY
CONCRETE SLAB
CROSSES - UNNAMED CREEK
DATE OF CONSTRUCTION - 1941
BUILDER - WORKS PROGRESS ADMINISTRATION (WPA)
HISTORIC BRIDGE INVENTORY DATE - 2010
SHPO NUMBER - PP0283
HAER NUMBER -
DATE LISTED ON NATIONAL REGISTER -
LAT./LONG. 35:23:40.84, -92:54:13.92



←
North

Hector 7.5 min. Quad